



BAM25-150-D-C-1064

The a|BeamExpander is a monolithic laser accessory with just one aspheric lens for the highest level of precision. Experience nearly endless possibilities with up to 32× beam magnification and optimized performance for different design wavelengths [355 nm / 532 nm / 632 nm / 780 nm / 1064 nm].

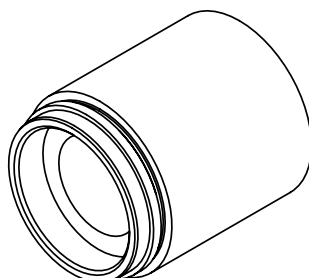
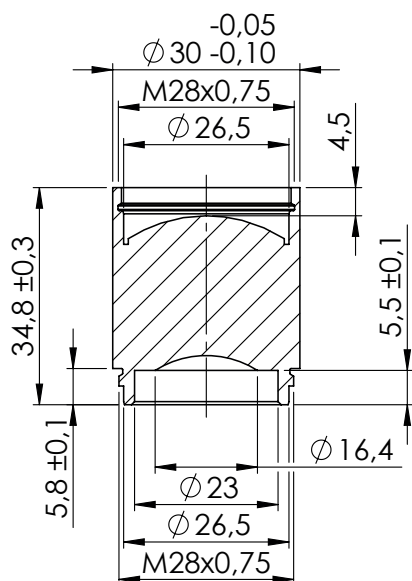
Key Benefits:

- = Design wavelength: 1064 nm, magnification: 1.5
- = Possibility of combining up to five expander for up to 32 times beam expansion and over 230 intermediate stages
- = Completely diffraction-limited – individually measured and guaranteed by an original asphericon certificate
- = Laser induced damage threshold (Coating): 12 J/cm², 100 Hz, 6 ns, 532 nm

Like all BeamTuning elements all a|BeamExpander come with a broadband coating. For higher laser power applications please request a V-Coating. Contact us for an individual offer. Please note the material damage threshold of your set-up!



Technical Dimensions:



asphericon GmbH
Stockholmer Str. 9 | 07747 Jena
Germany



+49 (0) 3641 - 3100 560



+49 (0) 3641 - 3100 561

asphericon s.r.o.
Miliřská 449 | Jeřmanice 463 12
Czech Republic



+420 488 100 300

asphericon, Inc.
2601 Cattlemen Road, Suite 301
Sarasota, FL 34232 | USA



+1 - 941 - 564 0890



sales@asphericon.com



www.asphericon.com